



MONTHLY MEMBERSHIP PROGRESS REPORT

District 2 X3

Results as of: 11/30/2015

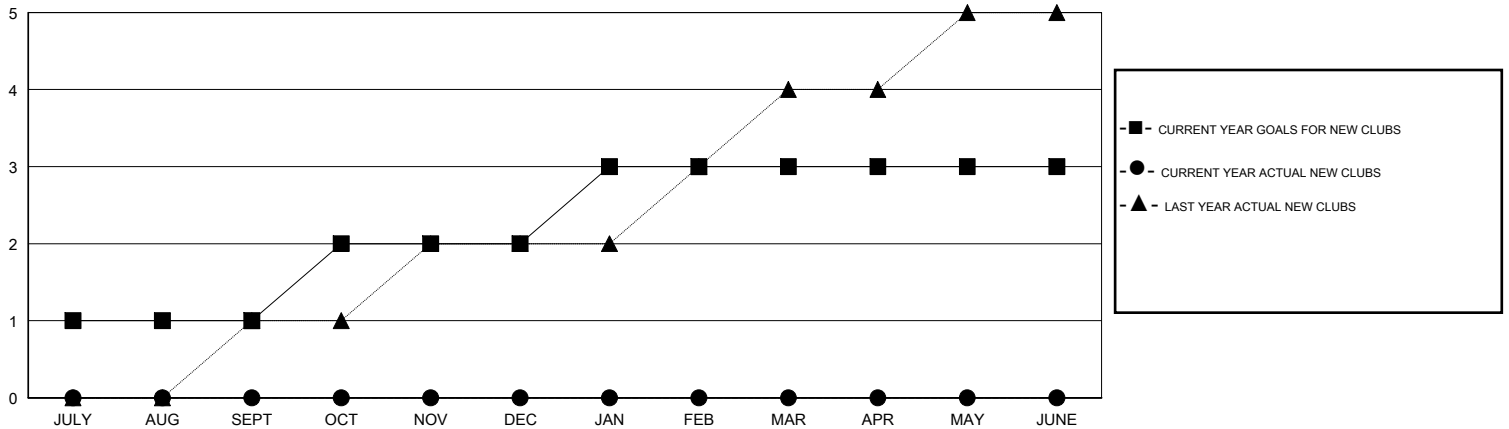
GMT: HAL GRIFFIN

LOCATION TEXAS

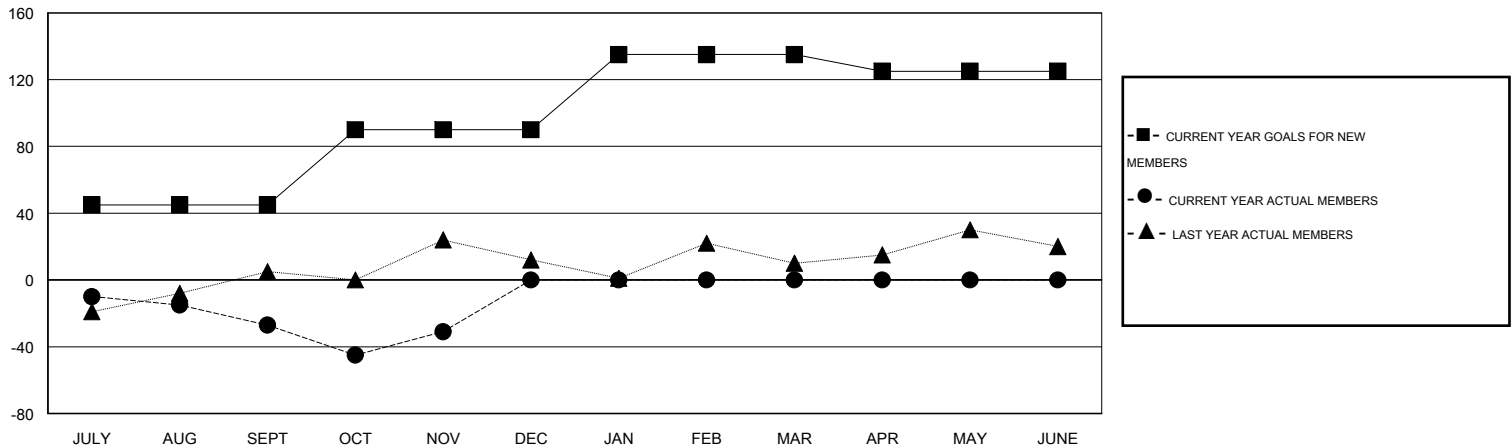
GMT CA 1

Clubs					Members				
RESULTS FOR 2015-2016					RESULTS FOR 2015-2016				
QUARTER	NEW CLUB GOAL	NEW CLUBS	DROPPED CLUBS	NET GAIN/LOSS	QUARTER	NEW MEMBER GOAL	CHARTER AND NEW MEMBERS ADDED	DROPPED MEMBERS	NET GAIN/LOSS
JULY/AUG/SEPT	1	0	0	0	JULY/AUG/SEPT	45	59	86	-27
OCT/NOV/DEC	1	0	1	-1	OCT/NOV/DEC	45	45	49	-4
JAN/FEB/MAR	1	0	0	0	JAN/FEB/MAR	45	0	0	0
APR/MAY/JUNE	0	0	0	0	APR/MAY/JUNE	-10	0	0	0

GOALS AND ACTUAL NEW CLUBS CUMULATIVE



GOALS AND ACTUAL MEMBERS CUMULATIVE



DROPPED CLUBS: 1	29 CLUBS OF 60 ADDED 1 OR MORE NEW MEMBERS	<u>GENDER DISTRIBUTION</u>	
		MALE	1,108 (66.35%)
<u>DROPPED MEMBERS</u>		FEMALE	562 (33.65%)
DECEASED	5	CLICK HERE FOR HEALTH ASSESSMENT DATA	
CLUB CANCELLED	14		
OTHER	116		
TOTAL	135	FAMILY UNIT MEMBERS	211
		HEAD OF HOUSEHOLD	105
		NON-HEAD OF HOUSEHOLD	106